

Annual Report

2015- 2016

include
YOUTH

Alpha House
3 Rosemary Street
Belfast BT1 1QA

T 028 90311007
E info@includeyouth.org
W www.includeyouth.org
T @includeyouth

Limited Company No. NI 38084
Charity No. NIC103383

include
YOUTH

As an organisation we continue to deliver excellent services to those most in need against a backdrop of reduced resources and greater competition.

Our policy work continued across the areas of youth justice and employability. We contributed to the final Juvenile Offenders Detention Alternative in Europe (JODA) manual of good practice, developed a training video for International Juvenile Justice Observatory (IJJO) and jointly commissioned research with Business in the Community NI setting out 100% employment opportunities for young people in care.

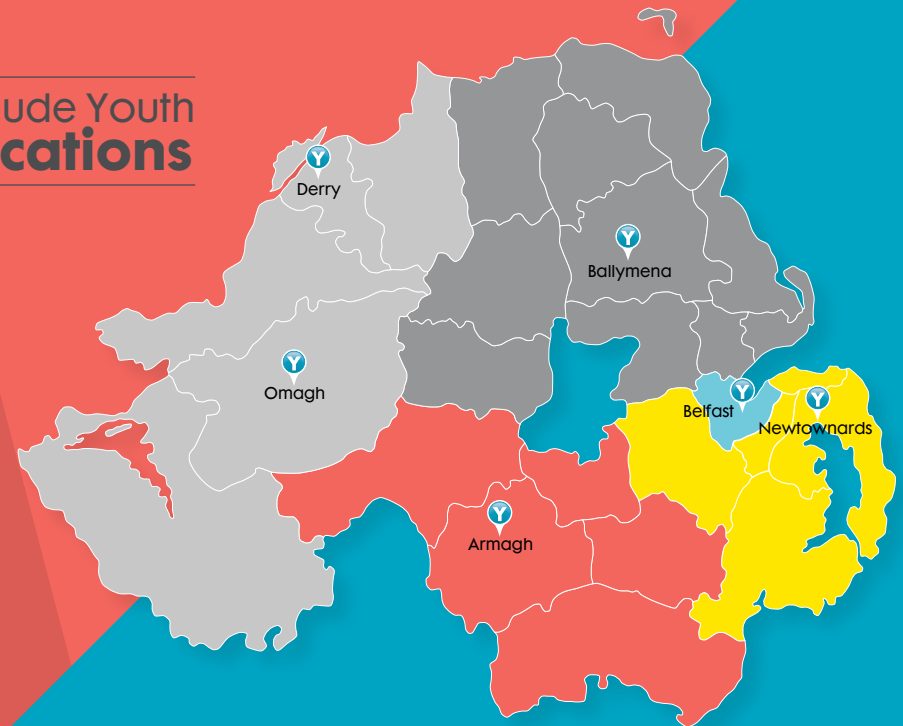
Many young people played their part in influencing policy and practice, meeting with Professor Kirsten Sandberg, UN Taskforce Committee member, and travelling to Geneva as part of the NI delegation to give evidence to the UNCRC on Children's Rights. Our Give and Take Scheme adapted to include several new strands and across our employability programmes we supported almost 500 young people. We managed one of the pilot United Youth projects in partnership with Newstart Education Centre, YMCA Lisburn, Youth Initiatives and NI Alternatives and continue to develop a range of working relationships with voluntary and community organisations.

Viable Corporate Services, our joint social enterprise with VOYPIC, is making good progress in our search for new premises for all three organisations. We faced staff losses as a result of our policy advocacy funding coming to an end, with our team of three policy staff and a communications officer reduced to two part-time posts.

I want to thank our staff for always putting the young people first and our voluntary board members who give their time freely to ensure effective governance and support. I would also like to express my appreciation to all our funders and long may our relationships continue. Finally, thanks to the young people who continue to impress me with their strength to overcome the most difficult circumstances. They are an inspiration to all of us.

Paddy Mooney
Director

Include Youth Locations



Belfast	Western	Northern	South Eastern
Include Youth head office Give & Take Scheme <ul style="list-style-type: none"> Core Start in partnership with NI Alternatives Outreach 1-2-1 Transitional Support Employability Service with START360 Aiming Higher in partnership with Business in the Community NI Strive United Youth Pilot with Newstart Education Centre, NI Alternatives, YMCA Lisburn & Youth Initiatives	Give & Take Scheme <ul style="list-style-type: none"> Core Outreach 1-2-1 Transitional Support Employability Service Southern Give & Take Scheme <ul style="list-style-type: none"> Core Outreach 1-2-1 Transitional Support 	Give & Take Scheme <ul style="list-style-type: none"> Core Outreach 1-2-1 Transitional Support 	Give & Take Scheme <ul style="list-style-type: none"> Core Start in partnership with NI Alternatives Outreach 1-2-1 Transitional Support Aiming Higher in partnership with Business in the Community NI Strive United Youth Pilot with Newstart Education Centre, NI Alternatives, YMCA Lisburn & Youth Initiatives

Investment

Total investment of **£2,005,209**



£76,835
Management & Administration



£1,643,337
Direct Services



£203,515
Policy



£81,522
Participation

OPEN HERE ↘

Policy Advocacy



Include Youth attended all the main political party conferences highlighting youth justice and youth employability issues. All of our policy responses referenced rights and international standards and included the voices of young people and staff. Practice staff were also included in meetings, briefings and events with key stakeholders wherever possible.



Employability Service – BELFAST TRUST



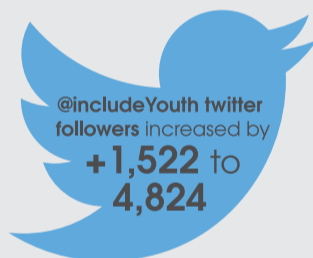
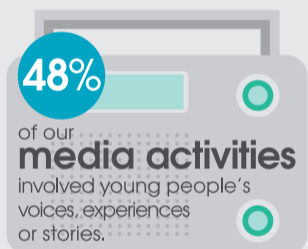
Implementing Children's Rights



Employability Service – WESTERN TRUST



Communications



Strive United Youth Pilot



Give & Take Scheme



The Give & Take Scheme supported **412 young people** through our **five strands**:

Core is a 12-month regional programme for care experienced young people aged 16 to 21

Start is a 14-week programme for young people aged 16 to 24 in North Down, Ards and Greater Belfast in partnership with NI Alternatives

Outreach is a 12-week weekly programme for young people that need employability support

1-2-1 is a tailored employability programme for young people at risk of child sexual exploitation

Transitional Support is a short-term support service for young people who are not in education, employment or training